

Modifying a Webcam

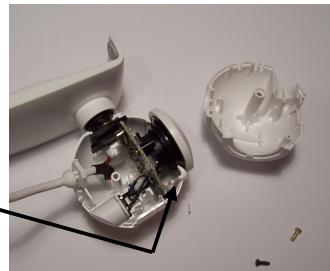
Because the CCD is sensitive to infrared, most webcams have an infrared filter to prevent the image looking washed out. This filter is easily removed. In this example a Logitech Quickcam is used, but the arrangement is likely to be similar in other webcams.



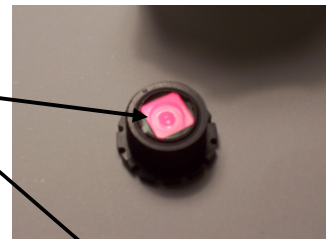
Remove the cover from around the lens. It is a pop fit.



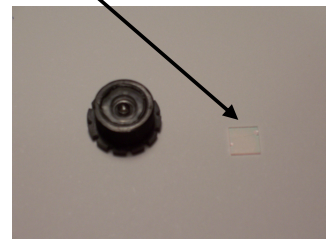
Remove the screws holding the casing together and split the casing in half. The lens assembly is in the front.



Lift out the circuit board and turn the focus ring until the lens assembly comes off the circuit board. Be careful to protect the exposed CCD. The filter in this webcam sat under the lens assembly. The focus ring will pull off the lens assembly.



The filter is difficult to remove as it is firmly attached. Pry it off with a plastic lever to avoid scratching the filter.



Use the steps in reverse to reassemble the webcam. If you want to be able to use the filter with the webcam, a solution is to use duct tape to make a flexible frame for the filter which can then be wedged over the lens on the front of the focus ring.

